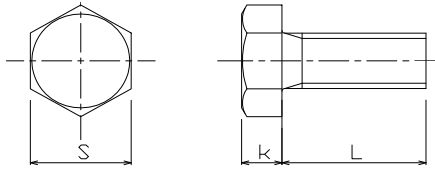


**SUS 310S, stainless steel
HEX HEAD CAP SCREW**



Please order this product by series number R830-B1180-310S-DIAMETER X LENGTH

Example: R830-B1180-310S-M4x10

USD/100pcs

	M6		M8		M10		M12		M14		M16	
s	10		13		17		19		22		24	
k	4		5.5		7		8		9		10	
box q'ty	1		1		1		1		1		1	
L	1-49pcs	50 & above	1-49pcs	50 & above	1-29pcs	30 & above	1-29pcs	30 & above	1-19pcs	20 & above	1-19pcs	20 & above
10	\$543.00	\$455.00										
12	\$543.00	\$455.00										
15	\$543.00	\$455.00	\$543.00	\$455.00								
16	\$543.00	\$455.00	\$543.00	\$455.00	\$578.00	\$490.00						
20	\$543.00	\$455.00	\$543.00	\$455.00	\$578.00	\$490.00	\$595.00	\$525.00				
25	\$560.00	\$473.00	\$560.00	\$473.00	\$578.00	\$508.00	\$595.00	\$525.00			\$980.00	\$893.00
30	\$578.00	\$490.00	\$578.00	\$490.00	\$595.00	\$525.00	\$613.00	\$543.00	\$1,155.00	\$1,050.00	\$980.00	\$893.00
35	\$595.00	\$508.00	\$595.00	\$508.00	\$613.00	\$543.00	\$630.00	\$560.00	\$1,155.00	\$1,050.00	\$980.00	\$893.00
40	\$630.00	\$525.00	\$630.00	\$525.00	\$665.00	\$560.00	\$683.00	\$595.00	\$1,190.00	\$1,085.00	\$980.00	\$893.00
45	\$665.00	\$560.00	\$665.00	\$560.00	\$700.00	\$595.00	\$770.00	\$683.00	\$1,260.00	\$1,155.00	\$1,050.00	\$945.00
50	\$700.00	\$595.00	\$700.00	\$595.00	\$735.00	\$630.00	\$823.00	\$735.00	\$1,330.00	\$1,225.00	\$1,120.00	\$1,015.00
55					\$945.00	\$840.00	\$980.00	\$875.00	\$1,470.00	\$1,365.00	\$1,190.00	\$1,085.00
60	\$980.00	\$875.00	\$980.00	\$875.00	\$980.00	\$875.00	\$1,015.00	\$910.00	\$1,505.00	\$1,400.00	\$1,260.00	\$1,155.00
65					\$1,050.00	\$945.00	\$1,050.00	\$945.00	\$1,680.00	\$1,575.00	\$1,365.00	\$1,260.00
70	\$1,085.00	\$980.00	\$1,085.00	\$980.00	\$1,085.00	\$980.00	\$1,085.00	\$980.00	\$1,750.00	\$1,645.00	\$1,435.00	\$1,330.00
75					\$1,120.00	\$1,015.00	\$1,120.00	\$1,015.00	\$1,925.00	\$1,750.00	\$1,610.00	\$1,505.00
80			\$1,155.00	\$1,050.00	\$1,155.00	\$1,050.00	\$1,155.00	\$1,050.00	\$2,100.00	\$1,925.00	\$1,750.00	\$1,645.00
85											\$1,890.00	\$1,785.00
90			\$1,190.00	\$1,085.00	\$1,190.00	\$1,085.00	\$1,225.00	\$1,120.00			\$1,890.00	\$1,785.00
100			\$1,225.00	\$1,120.00	\$1,225.00	\$1,120.00	\$1,295.00	\$1,190.00			\$2,100.00	\$1,995.00
110							\$1,680.00	\$1,575.00			\$2,555.00	\$2,380.00
120							\$1,750.00	\$1,645.00			\$2,730.00	\$2,555.00
130							\$1,855.00	\$1,750.00			\$2,975.00	\$2,800.00
140							\$1,960.00	\$1,855.00			\$3,150.00	\$2,975.00
150							\$2,030.00	\$1,925.00			\$3,325.00	\$3,150.00

MARYLAND METRICS

phones: (410)358-3130 (800)638-1830 faxes: (410)358-3142 (800)872-9329

URL: <http://mdmetric.com> E-mail: techinfo@mdmetric.com

P.O. Box 261 Owings Mills, MD 21117 USA

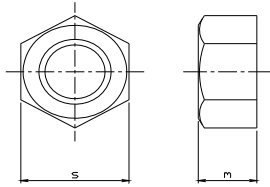
FASTENER CATALOG - CHAPTER S5

Many items in this chapter are not stocked in the U.S. Please allow adequate lead time for delivery and factory minimum order requirements.

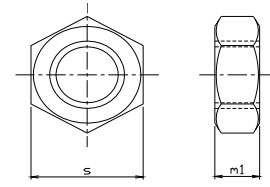
SUS 310S, stainless steel HEX HEAD CAP SCREW (Continuation)

	M18		M20		M22		M24		M30	
s	27		30		32		36		46	
k	12		13		14		15		19	
box q'ty	1		1		1		1		1	
L	1-9pcs	10 & above	1-9pcs	10 & above	1-9pcs	10 & above	1-4pcs	5 & above	1-4pcs	5 & above
40	\$1,785.00	\$1,610.00	\$1,540.00	\$1,435.00						
45	\$1,855.00	\$1,820.00	\$1,610.00	\$1,505.00						
50	\$1,960.00	\$1,925.00	\$1,680.00	\$1,575.00	\$2,380.00	\$2,205.00				
55			\$1,855.00	\$1,715.00	\$2,450.00	\$2,275.00				
60	\$2,223.00	\$2,170.00	\$1,925.00	\$1,785.00	\$2,555.00	\$2,380.00	\$3,325.00	\$3,150.00	\$5,600.00	\$5,250.00
65			\$2,030.00	\$1,890.00	\$2,625.00	\$2,450.00	\$3,500.00	\$3,325.00	\$5,775.00	\$5,425.00
70	\$2,520.00	\$2,450.00	\$2,100.00	\$1,960.00	\$2,800.00	\$2,625.00	\$3,675.00	\$3,430.00	\$5,950.00	\$5,600.00
75			\$2,170.00	\$2,030.00	\$2,975.00	\$2,800.00	\$3,850.00	\$3,675.00	\$6,300.00	\$5,950.00
80	\$2,695.00	\$2,625.00	\$2,275.00	\$2,135.00	\$3,150.00	\$2,975.00	\$3,850.00	\$3,780.00	\$6,650.00	\$6,300.00
85			\$2,415.00	\$2,275.00	\$3,325.00	\$3,150.00	\$4,200.00	\$4,025.00		
90	\$2,975.00	\$2,905.00	\$2,415.00	\$2,275.00	\$3,500.00	\$3,325.00	\$4,200.00	\$4,130.00	\$7,175.00	\$6,825.00
100	\$3,290.00	\$3,150.00	\$2,625.00	\$2,450.00	\$3,675.00	\$3,500.00	\$4,375.00	\$4,200.00	\$7,700.00	\$7,350.00
110			\$3,675.00	\$3,500.00	\$4,375.00	\$4,200.00	\$4,725.00	\$4,550.00	\$8,575.00	\$7,875.00
120			\$3,850.00	\$3,675.00	\$4,550.00	\$4,375.00	\$4,900.00	\$4,725.00	\$9,100.00	\$8,400.00
130			\$4,025.00	\$3,850.00	\$4,725.00	\$4,550.00	\$5,250.00	\$4,900.00	\$9,625.00	\$8,925.00
140			\$4,375.00	\$4,200.00	\$4,900.00	\$4,725.00	\$5,425.00	\$5,075.00	\$10,150.00	\$9,450.00
150			\$4,725.00	\$4,550.00	\$5,075.00	\$4,900.00	\$5,600.00	\$5,250.00	\$10,850.00	\$10,150.00
180			\$6,300.00	\$5,950.00					\$12,250.00	\$11,550.00
200			\$6,650.00	\$6,300.00					\$13,300.00	\$12,600.00

SUS 310S, stainless steel HEX NUT, JIS type 1



SUS 310S, stainless steel HEX JAM NUT, JIS type 3



Please order this product by series number R830-B1181T1-310S-DIAMETER
Example: R830-B1181T1-310S-M8

	s	m	box q'ty	USD/100pcs	
				1-49pcs	50 & above
M5	8	4	1	\$140.00	\$105.00
M6	10	5	1	\$63.00	\$42.00
M8	13	6.5	1	\$98.00	\$81.00
M10	17	8	1	\$193.00	\$175.00
M12	19	10	1	\$287.00	\$263.00
M14	22	11	1	\$438.00	\$403.00
M16	24	13	1	\$543.00	\$508.00
M18	27	15	1	\$875.00	\$875.00
M20	30	16	1	\$1,033.00	\$1,033.00
M22	32	18	1	\$1,330.00	\$1,330.00
M24	36	19	1	\$1,750.00	\$1,610.00
M27	41	22	1	\$2,555.00	\$2,380.00
M30	46	24	1	\$3,395.00	\$3,220.00
M33	50	26	1	\$5,075.00	\$4,725.00
M36	55	29	1	\$6,125.00	\$5,775.00

Please order this product by series number R830-B1181T3-310S-DIAMETER
Example: R830-B1181T3-310S-M8

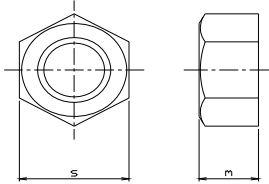
	s	m	box q'ty	USD/100pcs	
				1-49pcs	50 & above
M6	10	3.6	1	\$88.00	\$70.00
M8	13	5	1	\$158.00	\$133.00
M10	17	6	1	\$193.00	\$175.00
M12	19	7	1	\$287.00	\$263.00
M14	22	8	1	\$420.00	\$385.00
M16	24	10	1	\$525.00	\$490.00
M18	27	11	1	\$840.00	\$840.00
M20	30	12	1	\$980.00	\$980.00
M22	32	13	1	\$1,260.00	\$1,260.00
M24	36	14	1	\$1,645.00	\$1,645.00
M27	41	16	1	\$2,415.00	\$2,240.00
M30	46	18	1	\$3,220.00	\$3,045.00

MARYLAND METRICS
 phones: (410)358-3130 (800)638-1830 faxes: (410)358-3142 (800)872-9329
 URL: <http://mdmetric.com> E-mail: techinfo@mdmetric.com
 P.O. Box 261 Owings Mills, MD 21117 USA

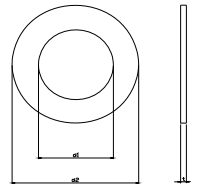
FASTENER CATALOG - CHAPTER S5

Many items in this chapter are not stocked in the U.S. Please allow adequate lead time for delivery and factory minimum order requirements.

**SUS 310S, stainless steel
HEX NUT, height 1xd**



**SUS 310S, stainless steel
ROUND WASHER**



Please order this product by series number R830-U5587-310S-DIAMETER
Example: R830-U5587-310S-M10

USD/100pcs

	s	m	box q'ty	1-29pcs	30 & above
M8	13	8	1	\$245.00	\$210.00
M10	17	10	1	\$315.00	\$263.00
M12	19	12	1	\$420.00	\$385.00
M14	22	14	1	\$665.00	\$595.00
M16	24	16	1	\$910.00	\$840.00
M18	27	18	1	\$1,295.00	\$1,295.00
M20	30	20	1	\$1,645.00	\$1,470.00
M22	32	22	1	\$1,995.00	\$1,820.00
M24	36	24	1	\$2,625.00	\$2,450.00

Please order this product by series number R830-125-310S-DIAMETER

Example: R830-125-310S-M8

USD/100pcs

	d2	t	box q'ty	1-49pcs	50 & above
M6	12.5	1.5	1	\$70.00	\$53.00
M8	17	1.5	1	\$88.00	\$70.00
M10	21	2	1	\$105.00	\$81.00
M12	24	2.5	1	\$140.00	\$105.00
M14	28	2.5	1	\$210.00	\$193.00
M16	30	3	1	\$210.00	\$193.00
M18	34	3	1	\$455.00	\$350.00
M20	37	3	1	\$455.00	\$350.00
M22	39	3	1	\$595.00	\$490.00
M24	44	4	1	\$700.00	\$595.00
M27	50	4	1	\$770.00	\$665.00
M30	56	4	1	\$945.00	\$805.00
M36	66	5	1	\$2,625.00	\$2,450.00

SUS310S: Excellent performance in acid resistance, alkali resistance and heat resistance. Heat resistance are more preminent than SUS304.
Use in a combustion chamber, parts of a furnace, parts of engine, etc.

Chemical composition						
C	Si	Mn	P	S	Ni	Cr
0.08 max	1.50 max	2.00 max	0.045 max	0.030 max	19.00-22.00	24.00-26.00

MARYLAND METRICS

phones: (410)358-3130 (800)638-1830 faxes: (410)358-3142 (800)872-9329
URL: <http://mdmetric.com> E-mail: techinfo@mdmetric.com
P.O.Box 261 Owings Mills, MD 21117 USA

FASTENER CATALOG - CHAPTER S5

Many items in this chapter are not stocked in the US. Please allow adequate lead time for delivery and factory minimum order requirements.