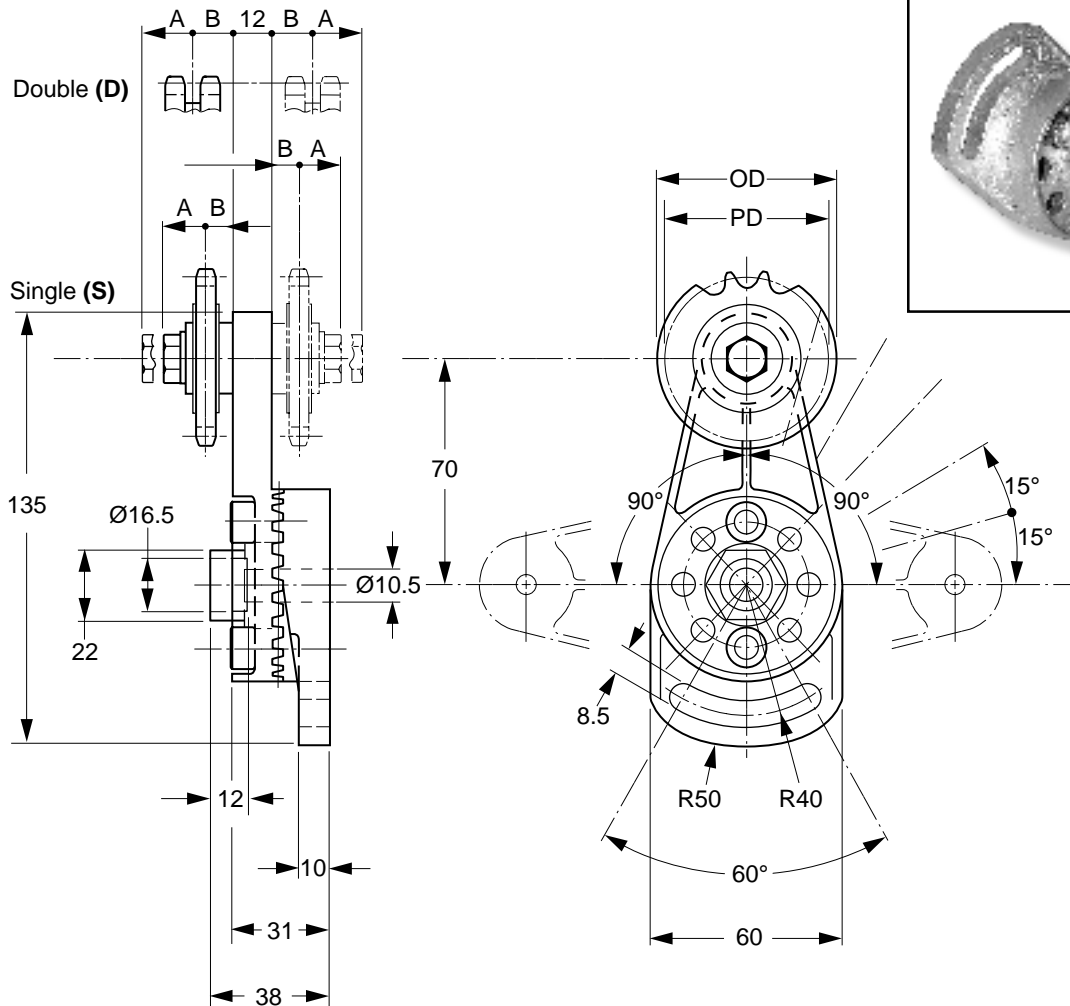




ORIENT1-R Type Tensioner

For 3/8" to 5/8" Pitch Roller Chains
Adjustable Angle – Not Spring-Loaded



MATERIAL: Arm – High-Tensile Die-Cast Aluminum Alloy
Sprocket – Steel (Heat-Treated)

Catalog Number	Chain Pitch	No. of Teeth	A	B	PD	OD
QCT-OR1R03S	3/8" X 7/32"	21	19.6	9.2	63.91	68
QCT-OR1R03D			16.7	11.6		
QCT-OR1R04S	1/2" X 5/16"	16	19.6	9.2	65.1	69.5
QCT-OR1R04D			18.5	13.5		
QCT-OR1R05S	5/8" X 3/8"	17	19.6	9.2	66.32	73
QCT-OR1R05D			22.3	16.8		

NOTE: Orientation of sprocket supplied as shown. End user can reposition if necessary.

All dimensions are in mm unless otherwise noted.

QTC, Econobelt & Zetasassi products are available from: MARYLAND METRICS
P.O.Box 261 Owings Mills, MD 21117 USA E-mail: sales@mdmetric.com
phones: (410)358-3130 (800)638-1830 faxes: (410)358-3142 (800)872-9329 url: http://mdmetric.com
 copyright 2003 maryland metrics/qtc/econobelt/zetasassi